



**U.S. National Ice Center**  
NOAA Satellite Operations Facility  
4231 Suitland Road  
Suitland, MD 20746

## **PRESS RELEASE**

### **FOR IMMEDIATE RELEASE**

Contact: LTJG Bryan R. Brasher, NOAA  
[NIC.PAO@noaa.gov](mailto:NIC.PAO@noaa.gov)  
301-817-3934

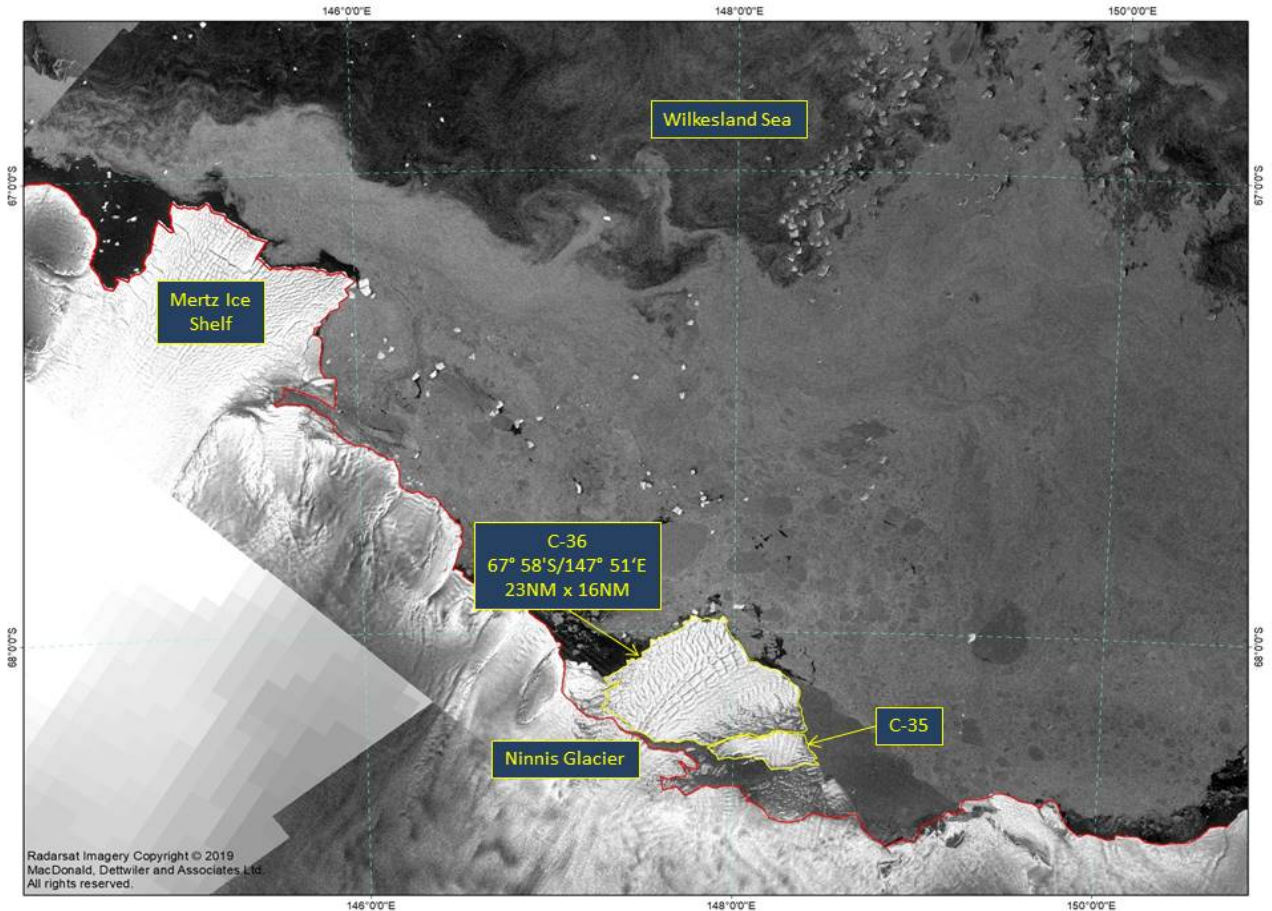
## **Ninnis Ice Shelf Calves to Form an Iceberg in the Eastern Wilkesland Sea**

January 31, 2019, Suitland, MD — The U.S. National Ice Center (USNIC) has named a new iceberg that calved from the Ninnis Ice Shelf in Antarctica. C-36 is located at 67°58' South, 147°51' East, in the eastern Wilkesland Sea. The iceberg measures 23 nautical miles on its longest axis and 16 nautical miles on its widest axis. The iceberg was discovered by Jan L Lieser, Lead, Sea Ice Service at the University of Tasmania and confirmed by USNIC Analyst Chris Readinger using the Radarsat-2 image shown below.

Iceberg names are derived from the Antarctic quadrant in which they were originally sighted. The quadrants are divided counter-clockwise in the following manner:

A = 0-90W (Bellingshausen/Weddell Sea)	C = 180-90E (Western Ross Sea/Wilkes land)
B = 90W-180 (Amundsen/Eastern Ross Sea)	D = 90E-0 (Amery/Eastern Weddell Sea)

When first sighted, an iceberg's point of origin is documented by USNIC. The letter of the quadrant, along with a sequential number, is assigned to the iceberg.



*Figure 1: Radarsat-2 image showing C-36 dated 26JAN19 (Radarsat-2 Imagery Copyright © 2019 MacDonal, Dettwiler, and Associates Ltd.).*

To access daily products, weekly products, archival data and much more of our data in various formats, visit the USNIC webpage at: [http://www.natice.noaa.gov/Main\\_Products.htm](http://www.natice.noaa.gov/Main_Products.htm)

For more information, please contact:

U.S. National Ice Center

Command Duty Officer

E-mail: [nic.cdo@noaa.gov](mailto:nic.cdo@noaa.gov)

Voice: (301) 817-3975

Visit us on Facebook at: <https://www.facebook.com/NationalNavalIceCenter/>

**The U.S. National Ice Center is a multi-agency center operated by the Navy, NOAA, and Coast Guard and provides global to tactical scale ice and snow products, ice forecasting, and related environmental intelligence services for the United States government.**

