



**U.S. National Ice Center**  
NOAA Satellite Operations Facility  
4231 Suitland Road  
Suitland, MD 20746

## **PRESS RELEASE**

### **FOR IMMEDIATE RELEASE**

Contact: LTJG Bryan R. Brasher, NOAA  
[NIC.PAO@noaa.gov](mailto:NIC.PAO@noaa.gov)  
301-817-3934

## **Arctic Sea Ice Reaches Maximum Extent**

March 26, 2018, Suitland, MD — The U.S. National Ice Center has determined that the 2018 maximum Arctic sea ice extent occurred on March 17<sup>th</sup> and marked the second smallest maximum Arctic sea ice extent on record behind 2017.

The U.S. National Ice Center assesses that at its winter maximum, the 2018 Arctic sea ice covered approximately 14.5 million square kilometers, which is slightly larger than the 14.2 million square kilometers observed in 2017. Following the sea ice maximum, Arctic sea ice will melt and retreat until a minimum is reached in September.

Ice analysts at the U.S. National Ice Center continuously monitor the global sea ice environment. Personnel analyze a combination of synthetic aperture radar, visible, and infrared satellite imagery to provide daily and weekly assessments of sea ice extent, concentration, and stage of development in these remote regions.

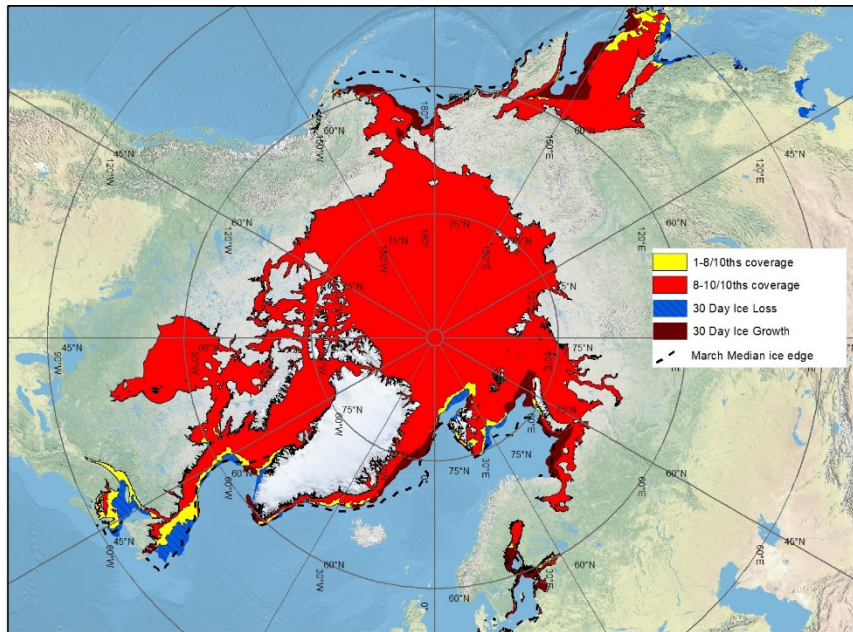


Figure 1. 30 Day Ice Growth / Loss during approximately the timeframe of maximum ice extent.

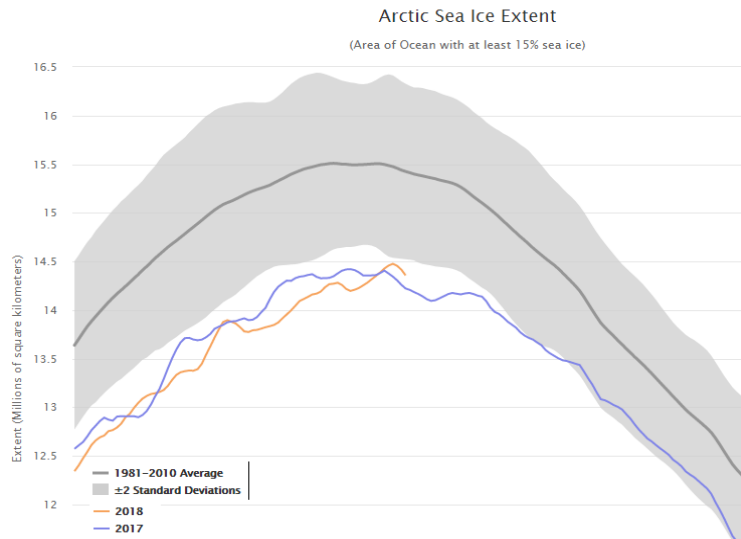


Figure 2. Arctic Sea Ice Extent in 2018 and 2017 from January to June. Note that these are both below two standard deviations of average ice extent. Credit: National Snow and Ice Data Center.

To access daily products, weekly products, archival data and much more of our data in various formats, visit the USNIC webpage at: [http://www.natice.noaa.gov/Main\\_Products.htm](http://www.natice.noaa.gov/Main_Products.htm)

For more information, please contact:

U.S. National Ice Center

Command Duty Officer

E-mail: [nic.cdo@noaa.gov](mailto:nic.cdo@noaa.gov)

Voice: (301) 943-6977

Visit us on Facebook at: <https://www.facebook.com/NationalNavalIceCenter/>

**The U.S. National Ice Center is a multi-agency center operated by the Navy, NOAA, and Coast Guard and provides global to tactical scale ice and snow products, ice forecasting, and related environmental intelligence services for the United States government.**

