



U.S. National Ice Center
NOAA Satellite Operations Facility
4231 Suitland Road
Suitland, MD 20746

PRESS RELEASE

26 February 2018

FOR IMMEDIATE RELEASE

Contact: LTJG Bryan R. Brasher, NOAA
NIC.PAO@noaa.gov
301-817-3934

Iceberg D-27 Calves off the Western Antarctic Ice Sheet

February 26, 2018, Suitland, MD — On February 26th 2018, the U.S. National Ice Center (USNIC) named a new Antarctic iceberg, D-27. The iceberg was identified by Jan L. Lieser, Lead, Sea Ice Service at the University of Tasmania and confirmed by USNIC Analyst Chris Readinger using the Sentinel-1B synthetic-aperture radar (SAR) image shown below. This section of ice had been calving from the West Ice Shelf for a number of years and separation is now complete.

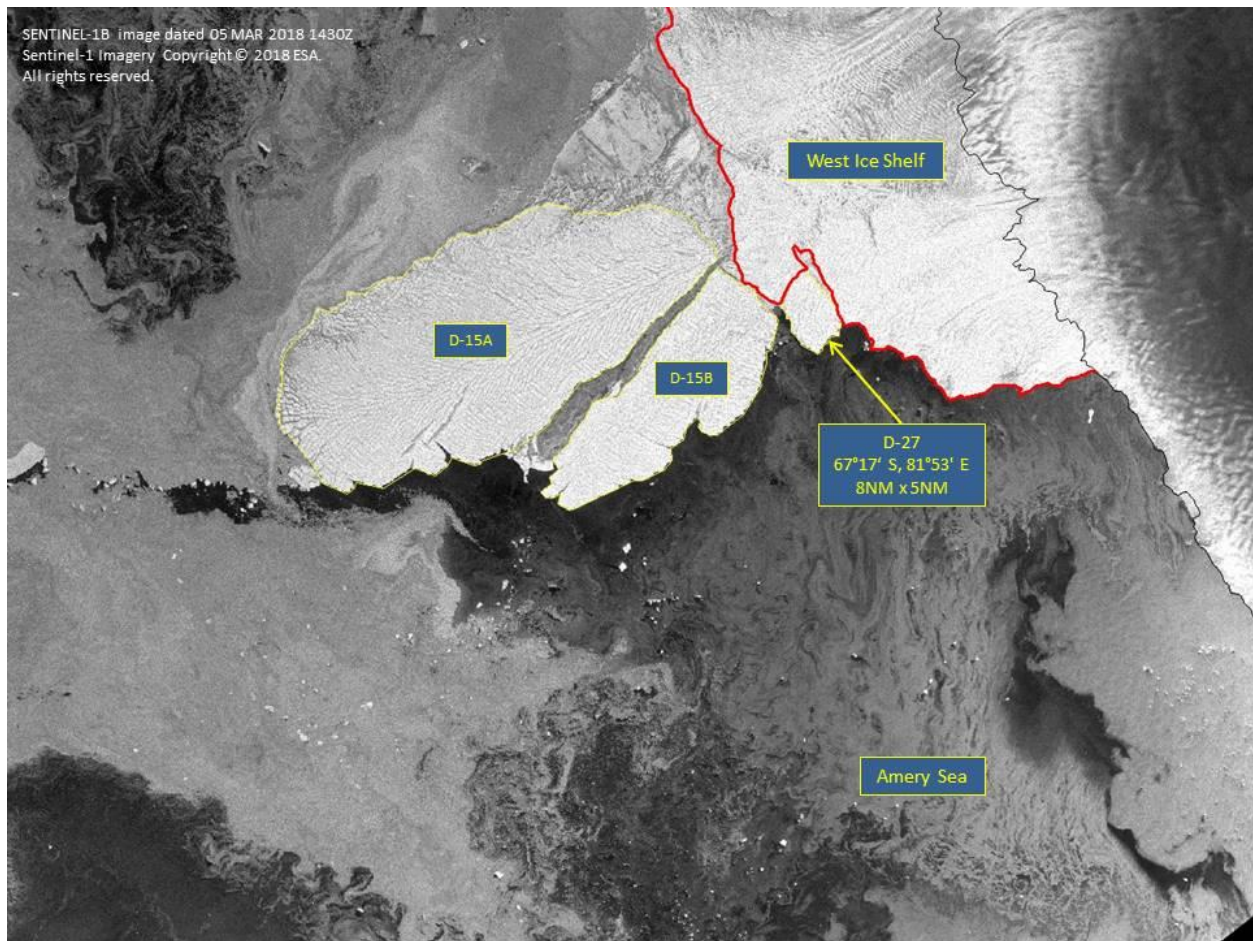
D-27 is located in the Amery Sea at 67°17' South, 81°53' East, just south of the much larger iceberg D-15B. D-27 measures eight nautical miles on its longest axis and five nautical miles on its widest axis.

Iceberg names are derived from the Antarctic quadrant in which they were originally sighted. The quadrants are divided counter-clockwise in the following manner:

- A = 0-90W (Bellingshausen/Weddell Sea)
- B = 90W-180 (Amundsen/Eastern Ross Sea)
- C = 180-90E (Western Ross Sea/Wilkesland)
- D = 90E-0 (Amery/Eastern Weddell Sea)

When first sighted, an iceberg's point of origin is documented by USNIC. The letter of the quadrant, along with a sequential number, is assigned to the iceberg. For example, C-19 is sequentially the 19th iceberg tracked by the USNIC in Antarctica between 180-90E (Quadrant C).

The U.S. National Ice Center is a tri-agency operational center represented by the United States Navy (Department of Defense), the National Oceanic and Atmospheric Administration (Department of Commerce), and the United States Coast Guard (Department of Homeland Security). The U.S. National Ice Center mission is to provide the highest quality strategic and tactical ice services tailored to meet the operational requirements of U.S. national interests and to provide specialized meteorological and oceanographic services to United States government agencies.



Sentinel-1B image of D-27 dated March 05, 2018

To access daily products, weekly products, archival data and much more of our data in various formats, visit the USNIC webpage at: http://www.natice.noaa.gov/Main_Products.htm

For more information, please contact:

U.S. National Ice Center

Command Duty Officer

E-mail: nic.cdo@noaa.gov

Voice: (301) 943-6977

Visit us on Facebook at: <https://www.facebook.com/NationalNavalIceCenter/>

The U.S. National Ice Center is a multi-agency center operated by the Navy, NOAA, and Coast Guard and provides global to tactical scale ice and snow products, ice forecasting, and related environmental intelligence services for the United States government.

