

U.S. National Ice Center

NOAA Satellite Operations Facility
4231 Suitland Road
Suitland, MD 20746

PRESS RELEASE

April 7, 2017

FOR IMMEDIATE RELEASE

Contact: Evelyn V. Bowens

NIC.PAO@noaa.gov

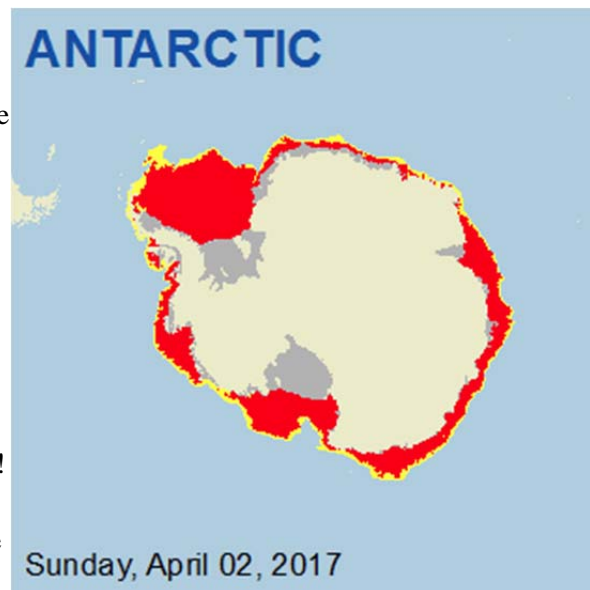
301-817-3975

U.S National Ice Center Celebrates 2017 Antarctic Sea Ice Birthday!

April 7, 2017 SUTLAND, MD — Sea ice in the Southern Hemisphere reached its minimum extent during the first week of March 2017. U.S. National Ice Center's (USNIC) uses the term 'Ice Birthday' to define the end of the sea ice melt season and the beginning of the new seasonal sea ice growth.

This year's sea ice melt season began in November 2016. USNIC's Antarctic hemispheric analysis this week has started to show some diurnal ice growth as the Southern Hemisphere moves into their sea ice growing season; hence the Antarctic Sea Ice Birthday!

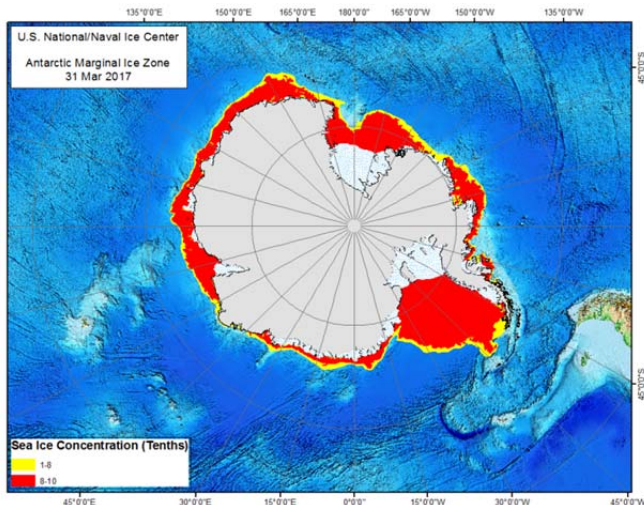
USNIC analysts are able to distinguish various sea ice types using a combination of space-based synthetic aperture radar (SAR) and visible and infrared satellite imagery to analyze ice conditions. A sample of our products is shown in figure 1, figure 2, figure 3 and figure 4. There is also a weekly analyzed iceberg position available. You can access this and more information at: http://www.natice.noaa.gov/Main_Products.htm



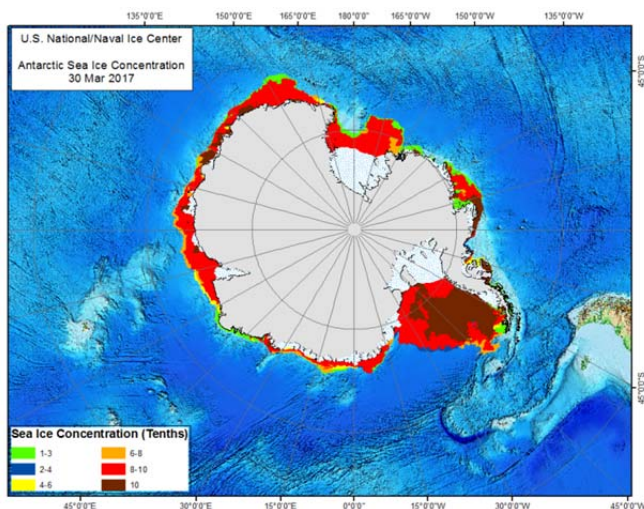
The Antarctic Daily Ice Edge graphic in figure 1 above is a daily ice edge product analyzed by USNIC sea ice experts using multiple sources of derived satellite products, buoy data, weather, and analyst interpretation of current sea ice conditions.

(USNIC graphic April 02, 2017)

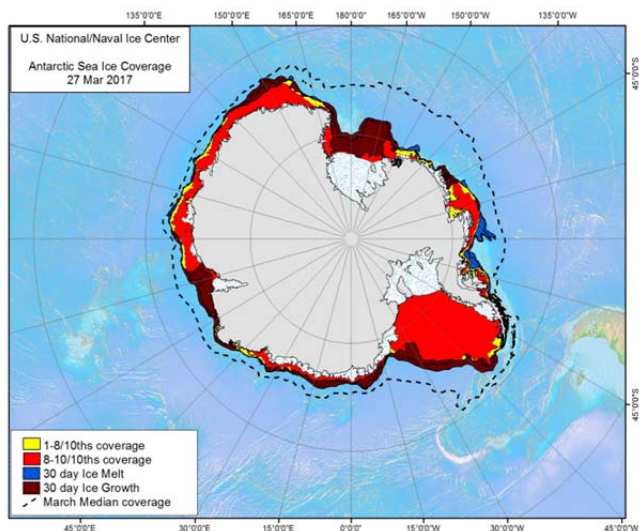
http://www.natice.noaa.gov/Main_Products.htm



The Antarctic Marginal Ice Zone graphic in figure 2 represents a USNIC Daily Ice Analysis product that depicts the daily sea ice pack in red (8-10/10ths or greater of sea ice), and the Marginal Ice Zone (MIZ) in yellow. The marginal ice zone is the transition between the open ocean (ice free) and pack ice. (USNIC graphic March 31, 2017) http://www.natice.noaa.gov/daily_graphics.htm



The Antarctic Sea Ice Concentration graphic in figure 3 is a weekly assessment of the current Antarctic marine environment and is analyzed by sea ice experts using multiple sources of near real time satellite data. (USNIC graphic March 30, 2017) http://www.natice.noaa.gov/weekly_con_graphics.htm



The Antarctic Sea Ice Coverage graphic in figure 4 represents a USNIC product that depicts the 30-day Sea Ice Change. The 30 day Sea Ice Change compares the sea ice extent over the past 30 days to the current sea ice extent for a particular day. (USNIC graphic March 27, 2017) http://www.natice.noaa.gov/weekly_chg_graphic

The U.S. National Ice Center is a multi-agency center operated by the Navy, NOAA, and Coast Guard and provides global to tactical scale ice and snow products, ice forecasting, and other environmental intelligence services for the United States government.

For more information, please contact:
U.S. National Ice Center
Command Duty Officer
E-mail: nic.cdo@noaa.gov
Voice: (301) 943-6977
Visit us on Facebook at:
<https://www.facebook.com/NationalNavalIceCenter/>